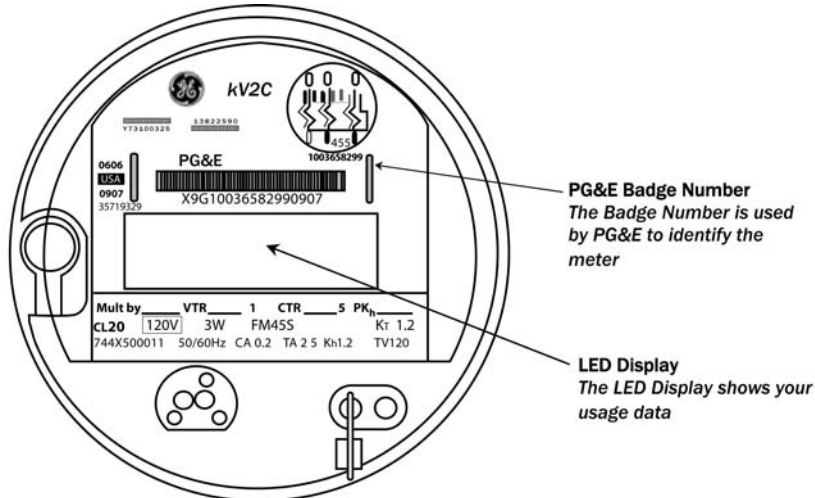


HOW TO READ YOUR NET ENERGY METERING (NEM) ELECTRIC METER (with E-6 Net rate)

This Meter Guide, and the diagrams below, will help you read the information displayed on your General Electric kV2C meter, which is used to calculate your bill.

Each month, Pacific Gas and Electric Company (PG&E) reads your meter, and this reading will be reported to you in your monthly NEM Electric Statement. Your meter is programmed to start with a setting of 50,000 kWh to prevent an initial display of less than zero (00000) if you are sending more energy to the grid than you are using.

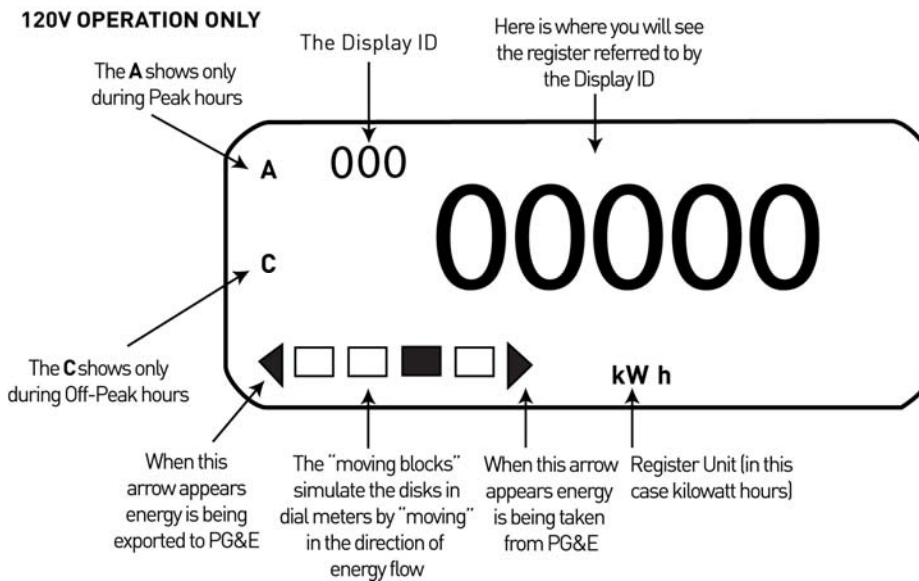


PG&E Badge Number
The Badge Number is used by PG&E to identify the meter

LED Display
The LED Display shows your usage data

The LED Display "Identification," shown below, typically changes every six seconds.

The Display (only features relevant to billing are shown)



Please note that this Guide does not apply to other types of General Electric meters, to an alternate manufacturer's meter, or to any other information displayed on your meter that is of a technical nature.

You will see the following sequence of Display IDs and corresponding information:

Display sequence for meters programmed with E-6 Net rate

Display ID	Value	Display Read Format	Notes
888	Segment Check	88.8.8.8.8	
99	Instantaneous kW	004.80	
1	Meter Date	MMDDYY	
2	Meter Time	HH MM (24-hour format)	
4	Total kWh	00000	Your total kWh hours are constantly changing, depending on how much energy you are either exporting to or importing from the grid.
	TOU kWh - Peak	00000	These will change as defined in the E-6 Time Period table below.
9	TOU kWh - Partial Peak	00000	These will change as defined in the E-6 Time Period table below.
13	TOU kWh - Off Peak	00000	These will change as defined in the E-6 Time Period table below.

Table of E-6 Time Periods

Time Period	May 1 to October 31	November 1 to April 30
Peak	1:00 p.m. – 7:00 p.m. Mon. – Fri.	(no Peak Hours)
Partial Peak	10:00 a.m. – 1:00 p.m. Mon. – Fri. 7:00 p.m. – 9:00 p.m. Mon. – Fri. 5:00 p.m. – 8:00 p.m. Sat. and Sun.	5:00 p.m. – 8:00 p.m. Mon. – Fri.
Off Peak	All Other Times Including Holidays (see the E-6 tariff for list of Holidays)	All Other Times Including Holidays

Should you have any questions about your meter, please feel free to contact PG&E's Solar Customer Service Center at 1-877-743-4112.

*"PG&E" refers to Pacific Gas and Electric Company, a subsidiary of PG&E Corporation.
©2009 Pacific Gas and Electric Company. All rights reserved.*

These offerings are funded by California utility customers and administered by PG&E under the auspices of the California Public Utilities Commission.